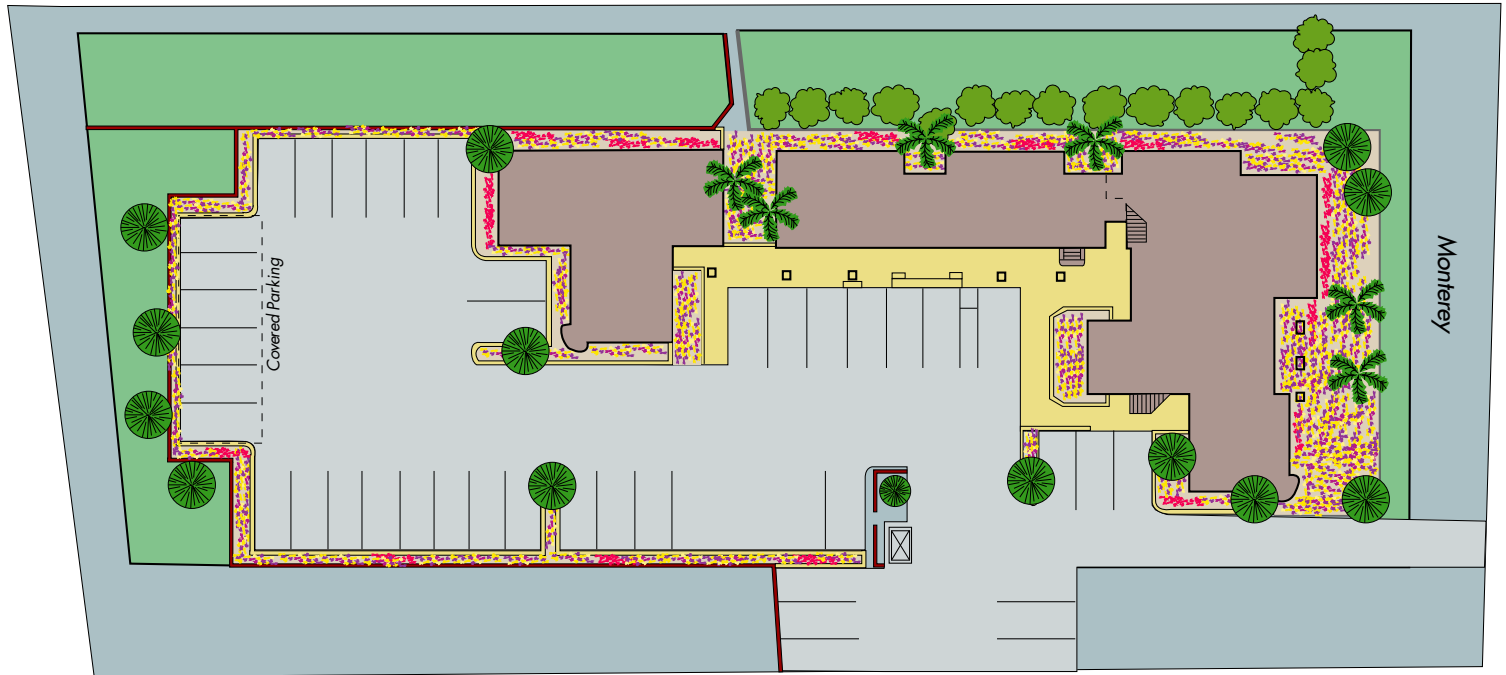
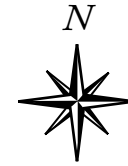


43-585 Monterey Avenue

Palm Desert, California 92260



FEATURES

- "Santa Fe" architectural design
- Two story building with elevator
- Suites from 530 square feet - 2800 square feet
- Centrally located on Monterey Avenue
- Adjacent to College of the Desert and the McCallum Theatre
- Covered parking
- Professional Office/Medical